

## Certificate of Analysis

---

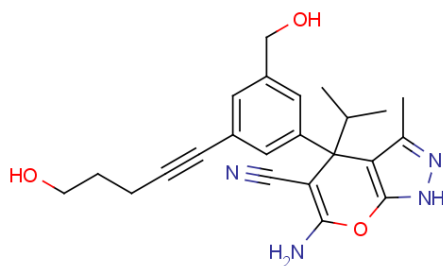
Cat. No.: EX-A5815  
Name: SHIN2  
CAS No.: 2204289-53-0  
Batch No.: 20230524A1

### CHEMICAL PROPERTIES

**Molecular Formula:**  $C_{23}H_{26}N_4O_3$

**Molecular Weight:** 406.4775

**Chemical Structure:**



### ANALYTICAL DATA

**Appearance:** Solid Powder  
**HNMR:** Consistent with structure  
**Purity HPLC:** 98.63%  
**Conclusion:** The product has been tested and complies with the given specifications.

Not fully tested, only for scientific research!