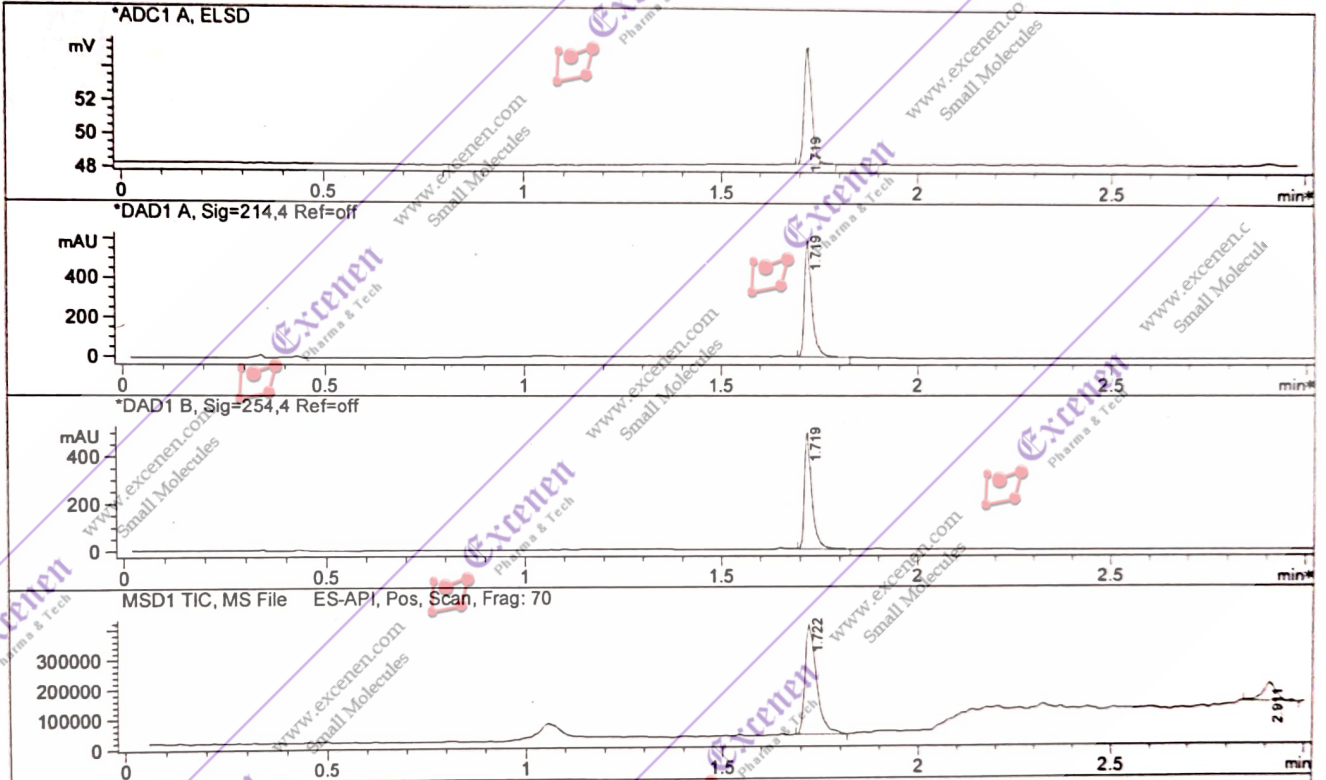


**Spec. Reported** : MS Integration **Inj Volume** : 2 ul  
**Acq. Method** : D:\METHODS\1-POS-3MIN.M  
**Analysis Method** : D:\METHODS\1-POS-3MIN.M  
**Sample Info** : Easy-Access Method: '1-POS-3MIN'  
**Method Info** : Mobile Phase: A: water (0.01%TFA) B: ACN (0.01%TFA)  
 Gradient: 5%B increase to 95%B within 1.3 min, 95%B for 1.7 min.  
 Flow Rate: 2.0ml/min  
 Column: Sunfire C18, 4.6\*50mm, 3.5um  
 Column Temperature: 50 C  
 Detection: UV (214, 4nm) and MS (ESI, Pos mode, 110 to 1500 amu)



Integration Results for ADC1 A, ELSD

RetTim	Width	Area	Height	Area%
1.72	0.02	9.47	7.10	100.00

Integration Results for DAD1 A, Sig=214,4 Ref=off

RetTim	Width	Area	Height	Area%
1.72	0.02	778.75	599.80	100.00

Integration Results for DAD1 B, Sig=254,4 Ref=off

RetTim	Width	Area	Height	Area%
1.72	0.02	647.20	498.67	100.00

